

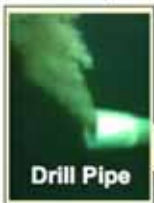
S**N**

← If the shoe fits, then it is probably true. →

BP picked up the fallen BOP & 1/5 of Riser connected to it & installed over Well A. Initially, the Riser tail trailed towards Well B, 300 ft away. That was the reason ROV's were working at Well B location to reset the trailing Riser tail towards S20BC location.

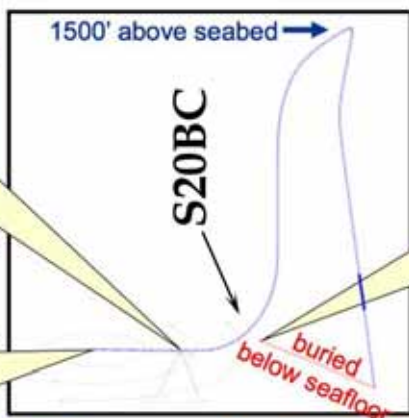
Isometric View

Fluid venting
From
Drill Pipe



Drill Pipe

Blow Out
Preventer
(BOP)



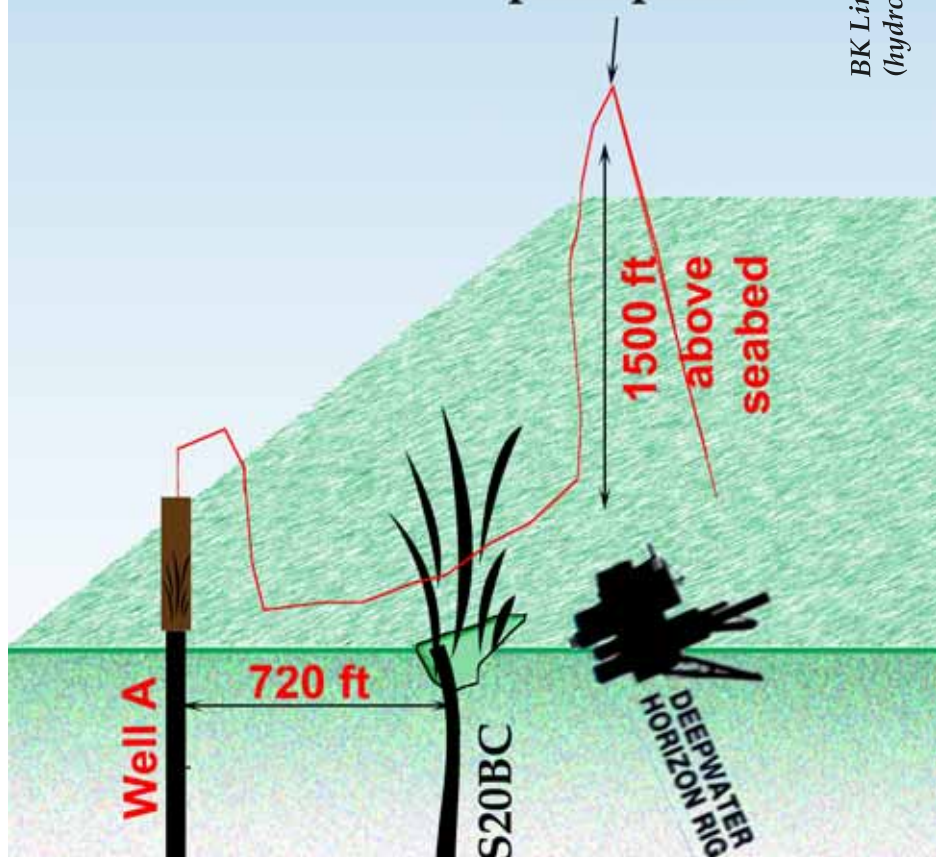
Seafloor water depth = 5,000'

Fluid plume venting
from Riser



BK Lim - 12 Aug 2010
(hydrocomeo@gmail.com)

pivot point



Well A

720 ft

S20BC

DEEPWATER
HORIZON RIG

1500 ft
above
seabed